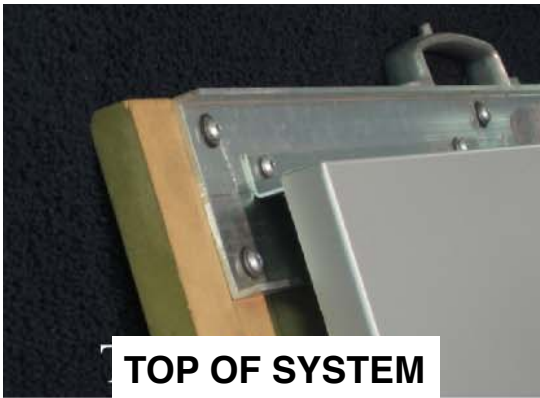


SSM - Series 100



Standard Sheet Metal's SSM 100 is an economical system that is well suited to complex applications where dry joint systems are cost prohibitive.



TOP OF SYSTEM



MID JOINT OF SYSTEM



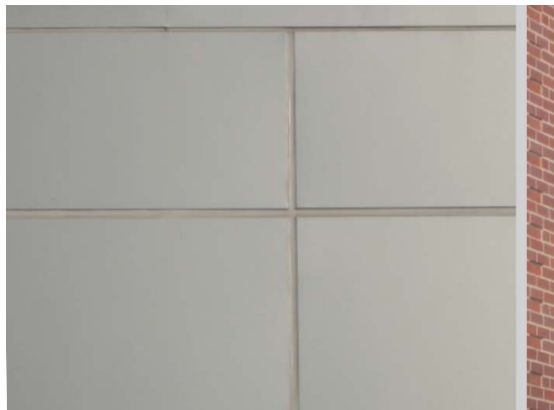
4 WAY JOINT



BOTTOM OF SYSTEM



Lamar Office Centre, Leawood, KS
Slaggie, Architects, Inc.



This system features a 1" nominal, route & return panel thickness, a 1/2" wet seal joint and full length perimeter extrusions that serve to reinforce the panel flanges while aligning the panel faces for a flatter surface.

Architectural / Commercial / Design / Engineering / Fabrication / Industrial / Installation

STANDARD SHEET METAL / 405 NORTH OLIVE STREET / KANSAS CITY, MO 64120 / 816.221.5434